

SmartScape

Aspire

The Next Generation Residential LED
Street Light from

zeta
Specialist Lighting

SmartScape Aspire Mini

Zeta's SmartScape Aspire Mini is a highly efficient LED street light suitable for a variety of applications in street and area illumination including; residential roads, car parks, footpaths, industrial areas and many more.

With optimum heat dissipation, highly efficient programmable driver and lumen efficiency of 145lm/W, the SmartScape Aspire Mini provides effective illumination and significant energy and cost savings when compared to a traditional SOX, SON and CFL luminaires.

SmartScape Aspire Mini has an excellent power factor of >0.99 making it one of the most efficient solutions on the market and with up to 30 lens options available, provides a range of optical distributions to suit any project requirement.

Zeta's SmartScape Aspire Mini is compatible with all standard Central Management Systems (CMS) meaning additional energy, cost and carbon savings can be achieved.

Weighing just 4.2 kg - the SmartScape Aspire Mini won't place any unnecessary strain on existing ageing posts and has tool-less entry, for ease of installation and maintenance.

Features

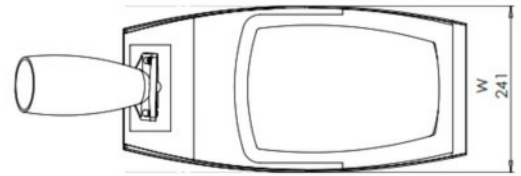
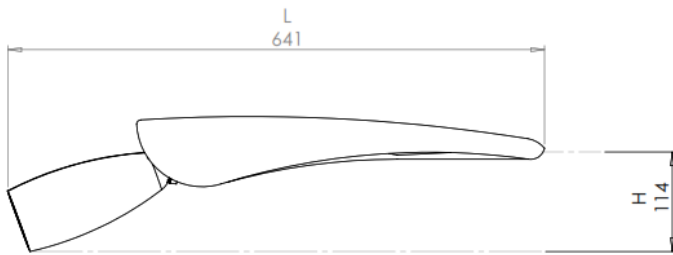
- Elegant, compact design
- CMS interface
- Highly efficient programmable driver
- Low maintenance
- Energy and cost saving
- Improved carbon efficiency
- Reduced light pollution
- High quality - UK made
- Tool-less access
- Light shields available

Applications

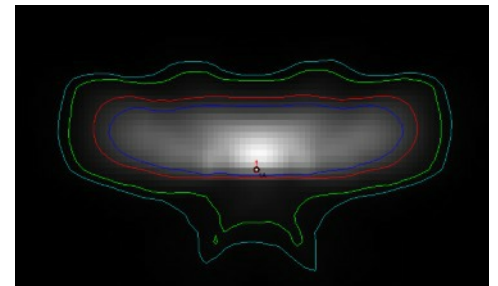
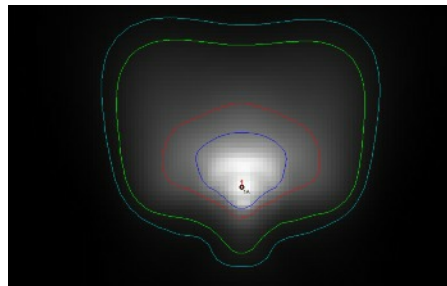
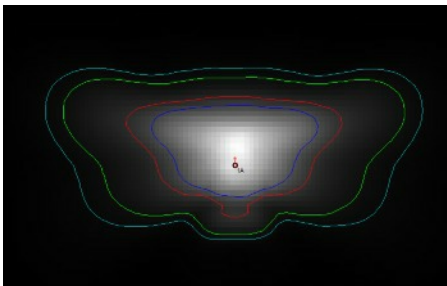
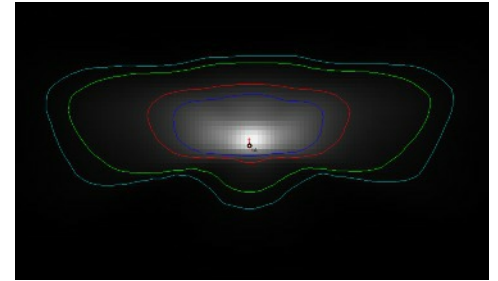
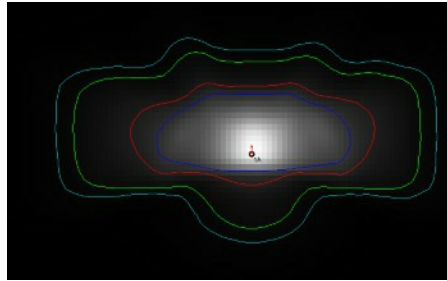
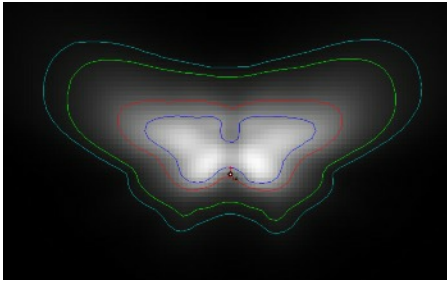
- Streets and roads
- Residential areas
- Industrial areas
- Commercial areas
- Pathways
- Car parks
- Railway stations
- Shopping precincts
- Parks and gardens
- Urban areas
- Rural areas



Dimensions



Lens Options - (up to 30 variants available)



Optical Performance

Philips LED - the Chip-On-Board Ceramic Substrate LED has a high lumen output, high efficacy, superior light distribution and more efficient heat dissipation than most competing products

CCT Options - A range of colour temperatures are available upon request, ranging from 2700K - 4000K

Colour rendering index - >80 (others available upon request)

Luminaire efficiency - 145lm/W

High Clarity PMMA lens - 93% clarity



Scotopic / Photopic (S/P) Ratio to BS 5489-1:2013

S/P Ratio of 1.55 based on SmartScape Aspire 4000k LED

Lighting Class	E Ave Standard	E Min Standard	E Ave S/P Ratio 1.55	E Min S/P Ratio 1.55
P1	15.0	3.0	12.88	2.58
P2	10.0	2.0	8.18	1.64
P3	7.5	1.5	5.93	1.19
P4	5.0	1.0	3.73	0.75
P5	3.0	0.4	2.03	0.41
P6	2.0	0.4	1.23	0.40

Control type	Description
Photocell	Miniature and top mounted options. Switching predetermined light levels i.e. 35:18 lux.
Smart Dimming	Intelligent programmable dimming cycles using DynaDimming built into the Xitanium Driver.
Full CMS	Full control and monitoring of each luminaire using DALI dimming or 0-10 dimming.

Controls

Highly efficient, fully programmable driver which can adjust the light level to suit the application and optimise energy savings.

Through the use of intelligent control systems, additional energy and cost savings can be achieved.

Installation/Assembly

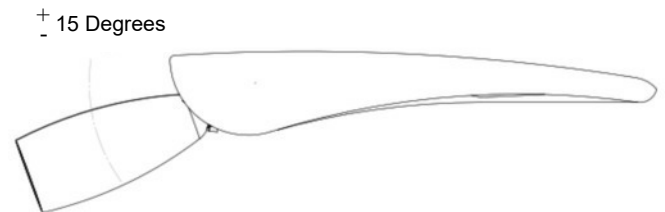
Tool-less entry featuring safety auto-disconnect on opening.

Suitable for column top mounting and side entry mounting.

Standard spigot sizes: 43, 60 and 76mm. Adapters available for bespoke sizes if required.

Accommodates mounting heights of up to 8m.

Available in a wide range of tilt angles in 5° increments, for both post top and side entry mounting.



Performance and Savings



Clever Heat Dissipation

The SmartScape Aspire incorporates intelligent cooling technology for optimum heat dissipation, which ensures a long life.

Improved Safety & Reduced Environmental Impact

Enhanced visibility for pedestrians and traffic through improved colour rendering (CRI) as well as reduced light pollution.

Long Lifespan

Lifetime **L90 B10 @ >100,000 hours** - which can be extended further with the use of smart controls.

Significant Energy & Carbon Savings

Savings in excess of **70%** in comparison to conventional technologies.

Payback

The SmartScape Aspire has been designed with cost in mind. The Aspire's extremely short return on investment periods mean it begins to save money from the point of install.



Specifications

Model	SmartScape Aspire Mini
Lumen Range (lumens)	320 - 5600lm
Light Source	Philips LED
Colour Rendering Index (CRI)	>80*
Power Factor	>0.99 (When not Dimmed)
Colour Temperature (CCT)	2700 - 4000K
Lumen Maintenance Output (LM80)	L90 B10 @ >100,000hrs
IP Rating	IP66
Dimensions (mm)	641(l) x 241(w) x 114(h)
Weight (kg)	4.2kg
Installation Height (m)	Up to 8m
Post Top/Side Entry Tilt	-15°, -10°, -5°, 0°, 5°, 10° and 15°
Material	Marine grade die cast aluminium body
Finish	Powder coated
Colours	Grey or Black (standard)**
Ambient Operating Temperature Range (°C)	-20°C to +45°C
Input Voltage (V)	198-264VAC, 50-60Hz
Dimmable (Y/N)	Y
Driver	Philips Xitanium
Driver Efficiency (at full load)	89%
Impact Rating	IK08***

*Other CRIs, if required, are available upon request

**Bespoke colours available on request (subject to MOQ of 1000 units)

***IK10 available



zeta

Specialist Lighting

For more information visit:

www.zetaled.co.uk

Zeta Specialist Lighting

Telford Road, Bicester

Tel +44(0)1869 322500

Oxfordshire

OX26 4LB

Email: info@thezetagroup.com

